

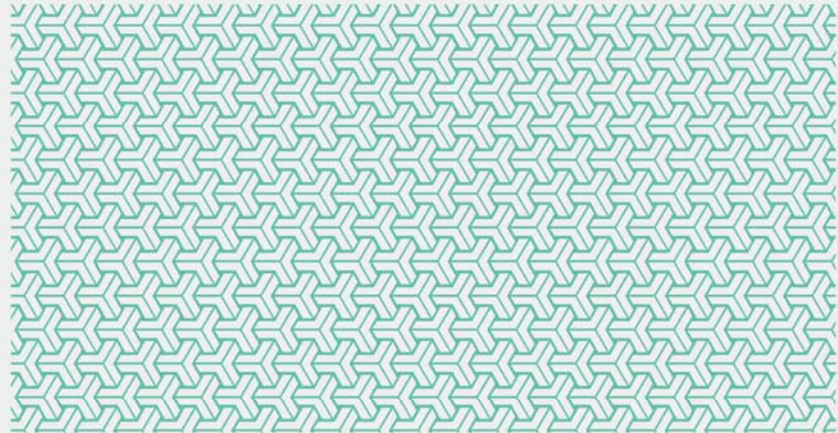
한옥 수선 지원제도의 실효성 제고방안 연구 - 지붕수선을 중심으로 -

Improving the Effectiveness of Support Systems for Hanok Roof Repair

진태승 Jin, Te Seung
김단비 Kim, Dan Bi
김해리 Kim, Hae Ri

(a u r i

Improving the Effectiveness of Support Systems for Hanok Roof Repair



Jin, Te-Seung

Kim, Dan-bi

Kim, Hae-ring

Most of the remaining hanok have been built for more than 30 years. Most of the hanok, which have not been completely renovated, are continuously getting old. When examining the results of the pilot check on old hanok, the defects of the roof and tile are frequent compared to other parts, and there is a lot of demand for repair. In case of neglecting the defects of the Hanok roof, the collapse of the roof itself can not guarantee the safety of the residents and leads to defects in the lower neck structure, so that the management of the roof in the hanok is more important than any other area. The purpose of this study is to examine the alternative permissible materials and construction methods which are being developed relatively cheaply in addition to the existing Korean style kitchens in order to promote the repair of the roofs of old Korean houses which have been neglected. To do this, we investigate alternative examples of repairing hanok roofs, cost and construction methods for various alternative materials, and investigate the experts' perceptions of them.

Recently, in order to improve the material and public weaknesses in the construction of traditional Korean dishes and roofs, a variety of technical attempts have been made in the field of hanok roof finishing and roof construction construction. In order to build a traditional Korean meal and roof, all the processes from the roof made up of sloping, waxy, and vodka to the tile are carried out in the form of handicrafts, so the labor cost is expensive and the air is long. It is not possible to exclude the possibility that the roof load affects the structural safety of the building, which may hinder the durability of the building, because the wet construction method using a large amount of wood and soil is applied. Due to the limited performance of the tile itself due to climate, roof tiles or roof leaks may occur. This problem is an inevitable phenomenon caused by the influence of weather over time, It places a burden on maintenance.

In addition, in the wake of the Kyungju earthquake of September, 2016, the problems of the traditional Korean style and roof construction method and the performance of the tile itself were more clearly revealed to us. In particular, the use of traditional Korean dishes and roofs in hanok residences, which had to face earthquake disasters directly at the site of everyday life, is no longer "how much should we pay to live in this house, how often should we care It is not a question of the choice of cooking that comes from the question of ' In front of the natural disaster of the earthquake, it is a question of 'how safe is this house?'

Based on the distribution of roof materials and hanok grades, we could examine

the distribution of old hanok roof materials according to the following two perspectives as follows. First, it is about the correlation between the aging of the hanok and the material of the roof. In the case of old hanok, where the use and maintenance of the hanok are not being carried out appropriately, the traditional tile, not the cement tile or the slate tile, is mainly distributed. Based on this tendency, it is thought that the use of traditional tiles in judging the hanok grade based on the goodness of the hanok is considered to be a major evaluation factor of appearance forming the hanok together with the evaluation of whether it has the completeness as the Korean food structure. Next, it is about whether there is a necessary condition to maintain and inherit the good level of the hanok and the correlation of the hanok roof material. In the case of the traditional tile-based hanok, it is evaluated that the proper condition of the hanok is well preserved in terms of structural and aesthetic conditions. For this purpose, the resident's will and economic capacity, financial support for traditional tile and roof repair, Guess is possible. On the other hand, it is evaluated that there is a structural and aesthetic lack of hanok with other roofs, which is simpler in construction method compared with roofs using traditional tiles, and lower in construction cost and material cost. In order to maintain and maintain the good level of hanok, It is difficult to see that the will of the people, the financial capacity, and the financial support for the roof repair would have been accompanied evenly.

As a result of analyzing the case of roof repair of the old hanok, it is found that the property of the place where the building is located needs to maintain the historical or landscape of the area (Office Architectural Office) or the owner wishes to maintain the present roof (Hamptifine stone house), it can be seen that the old material is preserved and recycled even if it is an old roof. When the roof is simply repaired with age, it is common to choose the material (junisys blossom) mainly according to the cost. It is easy to find promotional materials for steel roof tiles and tent companies that are perceived as being negatively associated with the design of the old hanok in the densely populated area. In fact, many old hanoks are being repaired through such companies Can be found. However, even with the use of cheap roofing materials, it seems that there is a tendency to choose a design that is similar to the color of the existing roof or that is not heterogeneous (original base) considering the surroundings.

The shape of a hanok can be mistaken for a long time, but it has changed little by little. In the modern era, various changes were made to the shape of a hanok with

the introduction of western technology. In the past, the materials of the roofs of the hanok have been mainly made up of the first floor rather than the tile, and the Japanese cement tile has spread widely throughout the Japanese occupation period. However, the institutional regulations on the hanok roof, It is fixed by using tiles. Through the enactment of the "Hanok and other Building Property Act", the definition of Hanok has been revised to open up the possibility of accepting modern technology, but local governments still can not escape the existing regulations. However, it is necessary to consider that many hanok are perceived as old buildings which are hard to live or utilize while sticking to traditional style and gradually disappear. Therefore, it is necessary to think about whether the purpose of the Hanok support system is to revive a few Hanok in traditional style or to preserve many Hanok in various styles.

The roof of the hanok has a hanok, which is a great help to build it. If you are using one in the old way, if you are using one, if you use one, you will receive the baggage using the auxiliary safe. Creole can do it. Therefore, in order to promote the repair of the roof of the hanok, the goal of the hanok support system is not to repair the hanok as a whole but to concentrate the support for the roof part, It is necessary to carry out. To this end, it is necessary to implement separate support criteria for roof repair in the local government support system. At this time, when the applicant for roof repair exceeds the local budget limit, the priority of the support can be determined by comparing and judging how much the traditional hanok reflects the traditional style.

There is a difference between traditional techniques and appearance depending on the time and area of the Hanok. There is also a hanok that uses tokyo, Japanese style tile, etc. without using a Korean style tile. It is not a reasonable method to ignore these differences and make uniform use of Korean style tile to repair the hanok, because it may impair the diversity of the hanok and increase the burden of roof load and total repair cost. It is also necessary to reconsider the application of the same roof repair standards to places where traditional hanok are densely populated or where the municipality intends to preserve special sites and landscapes and general areas. For example, it may be desirable to make use of Korean style cafes in areas that are particularly worthy of preserving the traditional roof view, It is reasonable to systematically allow the modern roof material inherited from traditional tiles to actively promote the utilization of existing hanok and to have a new place characteristic.